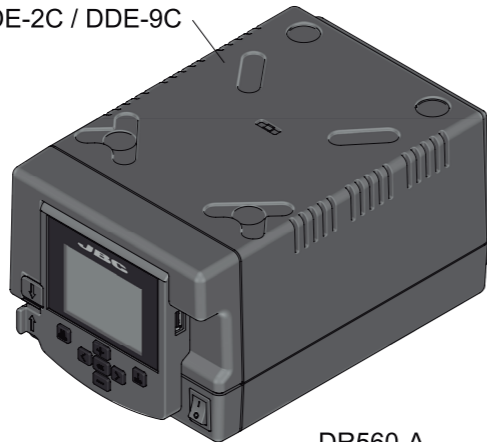


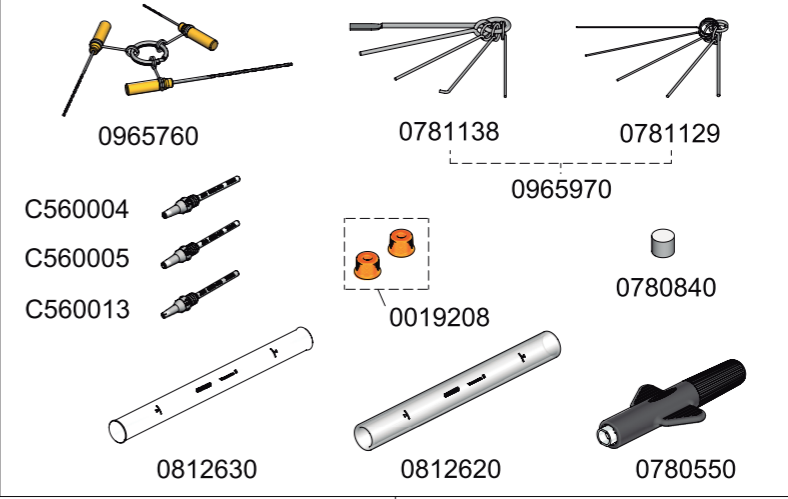
**DDSE-1C** 120V  
**DDSE-2C** 230V  
**DDSE-9C** 100V

REWORK STATION  
 WITH ELECTRIC PUMP

DDE-1C / DDE-2C / DDE-9C



SPARE PARTS	
<b>DDE-1C / DDE-2C / DDE-9C:</b>	
-REAR CIRCUIT	0018129
-ENCLOSURE	
· TOP	0019028
· BOTTOM	0014567
· FRONT+DISPLAY	0019246
· BACK	0013413
<b>MSE-A:</b>	
-CIRCUIT	0018453
-ENCLOSURE	
· TOP	0015266
· BOTTOM	0014010
· FRONT	0014688
· BACK	0015261
-PUMP	0005652



DDSE-1C 120V FUSE T-4A  
 DDSE-2C 230V FUSE T-2A  
 DDSE-9C 100V FUSE T-5A

